

GROUP A

Blazer by Camira

[es]	[en]
· Composición: 100% Pura Lana Virgen. Tintes no metálicos	· Composition: 100% Virgin Wool. Non metallic dyestuffs
· Peso: 460 gr/m2 ±5%	· Weight: 460 gr/m2 ±5%
· Resistencia a la abrasión: 50.000 cl. Martindale	· Abrasion resistance: 50.000 cl. Martindale
· Inflamabilidad: EN 1021-1 Cigarette (cigarrillo) • EN 1021-2 Match • UNI 9175 Classe 1 IM • ÖNORM B 3825 & A 3800-1 • BS 5852 Section Ignition Source 5 when FR treated • NF D 60-013 AM18 • UNI 9175 Classe 1 • BS EN 13501-1 Adhered Class D, s1, d0 • BS 476 Part 7 Class 1 • BS 476 Part 7 Class 1 • BS 5867-2: Type B • Medium Hazard when Zirpro treated	· Flammability: EN 1021-1 Cigarette • EN 1021-2 Match • UNI 9175 Classe 1 IM • ÖNORM B 3825 & A 3800-1 • BS 5852 Section Ignition Source 5 when FR treated • NF D 60-013 AM18 • UNI 9175 Classe 1 • BS EN 13501-1 Adhered Class D, s1, d0 • BS 476 Part 7 Class 1 • BS 476 Part 6 Class 0 when FR treatment requested • BS 5867-2: Type B • Medium Hazard when Zirpro treated
· Mantenimiento: limpieza en seco o paño húmedo. www.camirafabrics.com	· Maintenance: Professionally dry clean or wipe clean with a damp cloth. www.camirafabrics.com

Crips by Gabriel

· Composición: 93% Lana de Nueva Celandia, 7% Poliamida	· Composition: 93% New Zealand wool, 7% Polyamide
· Peso: 460 gr/ml.	· Weight: 460 gr/lm.
· Resistencia a la abrasión: 100.000 cl. Martindale	· Abrasion resistance: 100.000 cl. Martindale
· Inflamabilidad: BS 5852 Part 1 0,1 Cigarette (cigarrillo) & match • BS 476 Part 7 class II • BS EN 1021 1&2 Cigarette and Match • Class Uno UNI 9175 Class 1 I EMME • CAT B 117-2013 • IMO MSC 307(88) Annex 1 part 8 • MED Certificate IMO • ÖNORM A3800-B2-B3825-Q1 UK	· Flammability: BS 5852 Part 1 0,1 Cigarette & match • BS 476 Part 7 class II • BS EN 1021 1&2 Cigarette and Match • Class Uno UNI 9175 Class 1 I EMME • CA TB 117-2013 • IMO MSC 307(88) Annex 1 part 8 • MED Certificate IMO • ÖNORM A3800-B2-B3825-Q1 UK
· Mantenimiento: limpieza en seco. www.gabriel.dk	· Maintenance: dry cleaning. www.gabriel.dk

Breeze Fusion by Gabriel

· Composición: 88% Lana de Nueva Celandia, 12% Poliamida	· Composition: 88% New Zealand wool, 12% Polyamide
· Peso: 590 gr/ml.	· Weight: 590 gr/lm.
· Resistencia a la abrasión: 100.000 cl. Martindale	· Abrasion resistance: 100.000 cl. Martindale
· Inflamabilidad: BS 5852 Part 1 0,1 Cigarette (cigarrillo) & match • BS EN 1021 1&2 Cigarette and Match • CA TB 117-2013 • Class Uno UNI 9175 Class 1 I EMME	· Flammability: BS 5852 Part 1 0,1 Cigarette (cigarrillo) & match • BS EN 1021 1&2 Cigarette and Match • CA TB 117-2013 • Class Uno UNI 9175 Class 1 I EMME
· Mantenimiento: limpieza en seco. www.gabriel.dk	· Maintenance: dry cleaning. www.gabriel.dk

Remix 3 by Spradling

· Composición: 90% Lana, 10% Nylon	· Composition: 90% New wool worsted, 10% Nylon
· Peso: 415 gr/ml.	· Weight: 415 gr/lm.
· Resistencia a la abrasión: 100.000 cl. Martindale	· Abrasion resistance: 100.000 cl. Martindale
· Inflamabilidad: AS/NZS 1530.3 • AS/NZS 3837, class 2 • BS 5852 Crib 5 with treatment • BS 5852 part 1 • EN 1021-1/2 • IMO FTP Code 2010 Part 8 • NF D 60 013 • NFPA 260 • ÖNORM B1/ Q1 • UNI 9175 1IM • US Cal. Bull. 117-2013	· Flammability: AS/NZS 1530.3 • AS/NZS 3837, class 2 • BS 5852 Crib 5 with treatment • BS 5852 part 1 • EN 1021-1/2 • IMO FTP Code 2010 Part 8 • NF D 60 013 • NFPA 260 • ÖNORM B1/ Q1 • UNI 9175 1IM • US Cal. Bull. 117-2013
· Mantenimiento: consultar en www.kvadrat.org	· Maintenance: visit www.kvadrat.org

Creative Direction & Design:
Alambre Estudio

© Akaba, S.A.
All rights reserved
04/2023

AKABA

Atallu kalea 14
20170 Usurbil (Gipuzkoa)
Spain

akaba@akaba.net
T +34 943 372 211
F +34 943 371 052

F

FABRICS

GROUP A

AKABA

GROUP A

*Blazer
by Camira*



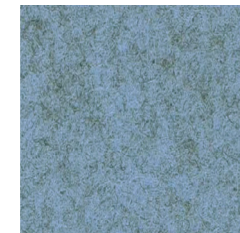
Ta-154 - SILCOATES



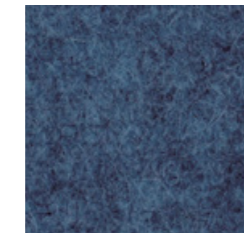
Ta-159 - ST. ANDREWS



Ta-155 - SILVERDALE

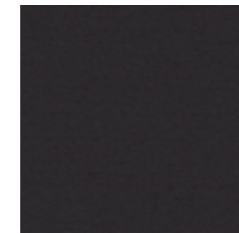


Ta-162 - PLYMOUTH



Ta-163 - NEWCASTLE

camira



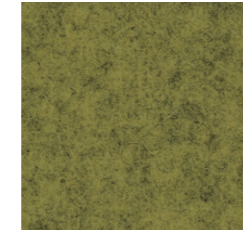
Ta-152 - NAPIER



Ta-164 - EDGE HILL

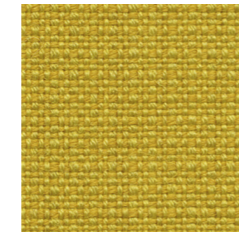


Ta-157 - DUNHURST

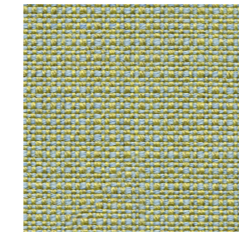


Ta-161 - CAMPHILL

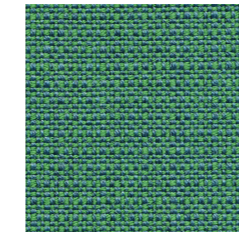
*Crisp
by Gabriel*



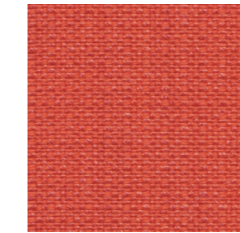
Ta-231 - CRISP 4211



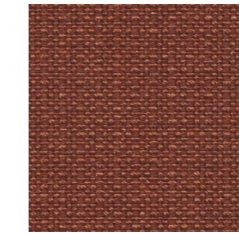
Ta-232 - CRISP 4201



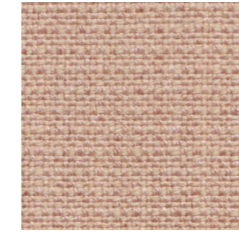
Ta-233 - CRISP 4605



Ta-235 - CRISP 4431



Ta-234 - CRISP 4301



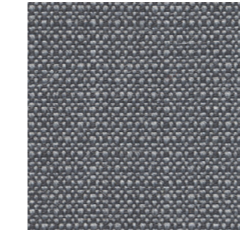
Ta-237 - CRISP 4711



Ta-239 - CRISP 4032



Ta-238 - CRISP 4115



Ta-230 - CRISP 4022

Gabriel

*Remix 3
by Kvadrat*



Ta-222 - REMIX3 632



Ta-224 - REMIX3 223



Ta-221 - REMIX3 612



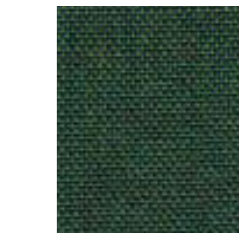
Ta-223 - REMIX3 733



Ta-227 - REMIX3 143



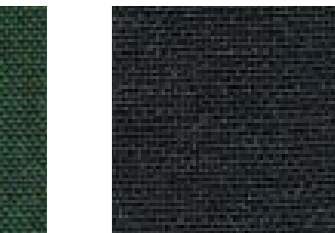
Ta-225 - REMIX3 233



Ta-226 - REMIX3 982



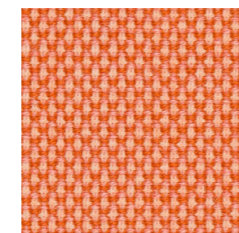
Ta-229 - REMIX3 433



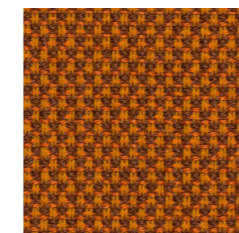
Ta-228 - REMIX3 183

kvadrat

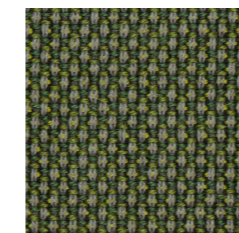
*Breeze Fusion
by Gabriel*



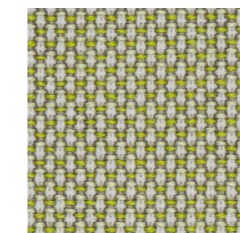
Ta-240 - BREEZE 4303



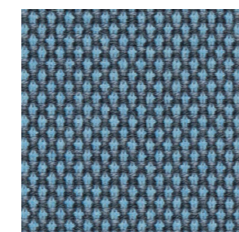
Ta-241 - BREEZE 4820



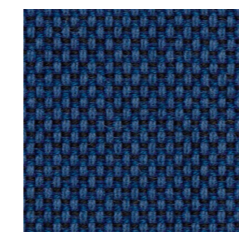
Ta-243 - BREEZE 4932



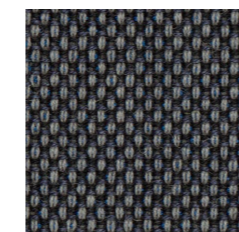
Ta-242 - BREEZE 4804



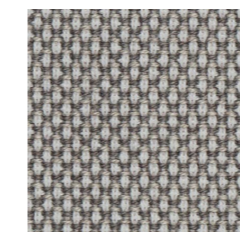
Ta-244 - BREEZE 4602



Ta-245 - BREEZE 4890



Ta-247 - BREEZE 4936



Ta-246 - BREEZE 4003

Gabriel

[es]

Para todas las colecciones aquí representadas, las referencias fuera de nuestro catálogo tendrán un cargo adicional de 45 euros netos por pedido.

Especificaciones técnicas al dorso. Los colores del muestrario pueden registrar una pequeña variación con respecto a la realidad.

[en]

For all the collections represented here, references outside of our catalog will have an additional charge of 45 euros net per order.

Technical specifications on the back. These samples are for guide reference.

[fr]

Pour toutes les marques représentées ici, les références hors catalogue ont un supplément de 45 euros nets par commande.

Les spécifications techniques figurent au dos. Ces échantillons sont donnés à titre indicatif.