

GROUP B

Main Line Flax by Camira

[es]	[en]
· Composición: 70% Lana Virgen 30% Lino	· Composition: 70% Virgin Wool 30% Flax
· Peso: 437 gr/m2 (550 gr/m.lin)	· Weight: 437 gr/m2 (550 gr/lin.m)
· Resistencia a la abrasión: 50.000 cl. Martindale	· Abrasion resistance: 50.000 cl. Martindale
· Inflamabilidad: BS EN 1021 - 1:2006 (cigarrillo) • BS EN 1021 - 2:2006 (cerilla) • BS 7176:2007 Low Hazard • BS 5852:2006 Section 4 Ignition Source 5 • BS 7076:2007 Medium Hazard	· Flammability: BS EN 1021 - 1:2006 (cigarrillo) • BS EN 1021 - 2:2006 (cerilla) • BS 7176:2007 Low Hazard • BS 5852:2006 Section 4 Ignition Source 5 • BS 7076:2007 Medium Hazard
· Mantenimiento: limpiar con aspiradora frecuentemente. Limpiar en seco o con un paño húmedo. www.camirafabrics.com	· Maintenance: vacuum regularly . Professionally dry clean or whipe clean with a damp cloth. www.camirafabrics.com

Step Melange by Gabriel

· Composición: Trevira CS100%	· Composition: Trevira CS100%
· Peso: 470 gr/ml.	· Weight: 470 gr/lm.
· Resistencia a la abrasión: 100.000 cl. Martindale EN ISO12947-2	· Abrasion resistance: 100.000 cl. Martindale EN ISO12947-2
· Inflamabilidad: EN 1021 1&2 2006 (cigarrillo) • BS 5852 0&1 • BS 5852 Crib 5 • DIN 4102-B1 • CAL 117-E • FAR/JAR 25.853 • ONORM B3825 B1-Q1 • NF92-503-M1 • CAT B 117-2013 • BS 7176 Medium Hazard • AM 18 - NF D 60-013 • IMO MSC 307 (88) Annex 1 aprt 8/ MED Certificate IMO • UNI 9175 Class 1 EMME	· Flammability: EN 1021 1&2 2006 (cigarrillo) • BS 5852 0&1 • BS 5852 Crib 5 • DIN 4102-B1 • CAL 117-E • FAR/JAR 25.853 • ONORM B3825 B1-Q1 • NF92-503-M1 • CAT B 117-2013 • BS 7176 Medium Hazard • AM 18 - NF D 60-013 • IMO MSC 307 (88) Annex 1 aprt 8/MED Certificate IMO • UNI 9175 Class 1 EMME
· Mantenimiento: limpieza en seco. www.gabriel.dk	· Maintenance: dry cleaning. www.gabriel.dk

Go Uni by Gabriel

· Composición: Trevira CS100%	· Composition: Trevira CS100%
· Peso: 435 gr/ml	· Weight: 435 gr/lm
· Resistencia a la abrasión: 100.000 cl. Martindale (UNI) 80.000 cl Martindale (COUTURE - CHECK)	· Abrasion resistance: 100.000 cl. Martindale (UNI) 80.000 cl Martindale (COUTURE - CHECK)
· Inflamabilidad: EN 1021 1&2 2006 (cigarrillo) • BS 5852 0&1 • BS 5852 Crib 5 • DIN 4102-B1 • FAR/JAR 25.853 • ONORM B3825 B1-Q1 • NF92-503/504/505-M1 • BS 7176 Medium Hazard • CAT B 117-2013 • UNI 9175 Class 1 IM	· Flammability: NF P 92-503 / M2 • EN 1021, part 1&2 • DIN 4102 B2 • ÖNORM B 3825 Gruppe I & B 3800 Teil I • IMO 307 part 8 • UNI 9175 (1987)/ UNI 9175 / FAI (1994) Classe 1 I.M. • UNE 23.727 - 90 IR/M2
· Mantenimiento: limpieza en seco. www.gabriel.dk	· Maintenance: dry cleaning. www.gabriel.dk

Valencia by Spradling

· Composición: Capa 100% Vinilo • Soporte: 100% Poliéster Hi-Loft 2TM	· Composition: Topcoat. 100% Vynil • Backing: 100% Polyester Hi-Loft2TM
· Peso: 650 gr/m2	· Weight: 650 gr/m2
· Resistencia a la abrasión: >300.000 cl. Martindale	· Abrasion resistance: >300.000 cl. Martindale
· Inflamabilidad: NF P 92-503 / M2 • EN 1021, part 1&2 • DIN 4102 B2 • ÖNORM B 3825 Gruppe I & A 3800 Teil I • IMO A 652 (16) Annex I, 8,2 & 8,3 • UNI 9175 (1987)/ UNI 9175 / FAI (1994) Classe 1 I.M. • UNE 23.727 - 90 IR/M2	· Flammability: NF P 92-503 / M2 • EN 1021, part 1&2 • DIN 4102 B2 • ÖNORM B 3825 Gruppe I & A 3800 Teil I • IMO A 652 (16) Annex I, 8,2 & 8,3 • UNI 9175 (1987)/ UNI 9175 / FAI (1994) Classe 1 I.M. • UNE 23.727 - 90 IR/M2
· Mantenimiento: limpiar con un paño húmedo. www.spradling.eu	· Maintenance: clean with a damp cloth. www.spradling.eu

Creative Direction & Design:
Alambre Estudio

© Akaba, S.A.
All rights reserved
04/2023

AKABA

Atallu kalea 14
20170 Usurbil (Gipuzkoa)
Spain

akaba@akaba.net
T +34 943 372 211
F +34 943 371 052



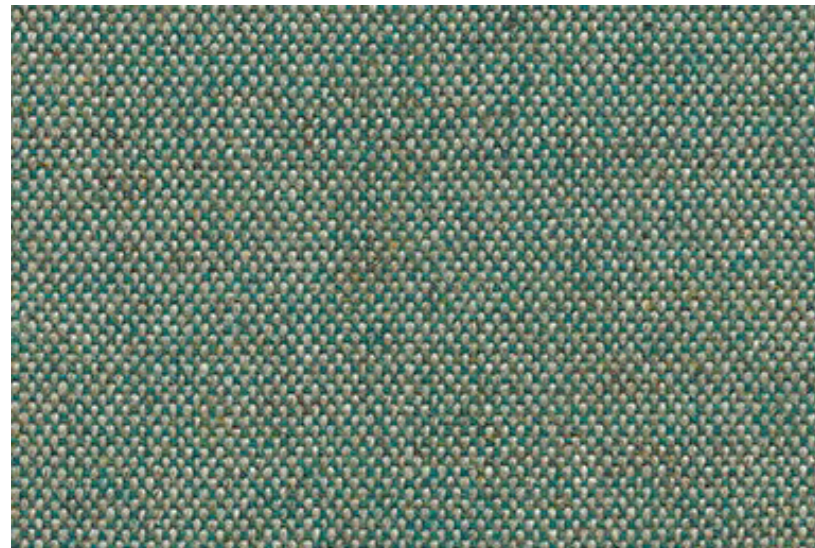
FABRICS

GROUP B

AKABA

GROUP B

*Main Line Flax
by Camira*



Tb-283 - BAYSWATER



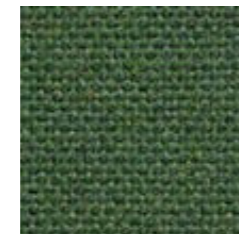
Tb-290 - UPMINSTER



Tb-287 - ARCHWAY



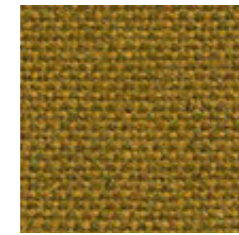
Tb-281 - WATERLOO



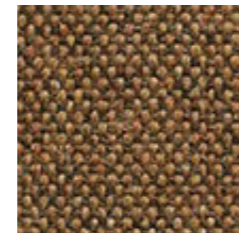
Tb-293 - FARRINGTON



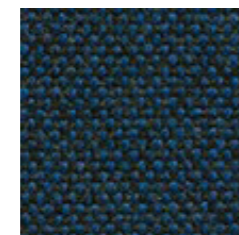
Tb-292 - PARSONS



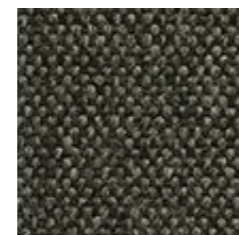
Tb-284 - GOLDHAWK



Tb-286 - STOCKWELL



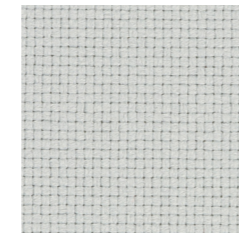
Tb-282 - VICTORIA



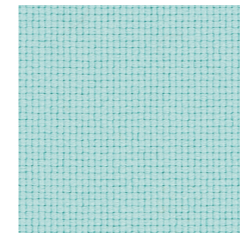
Tb-288 - TEMPLE

camira

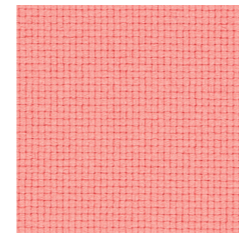
*Go Uni
by Gabriel*



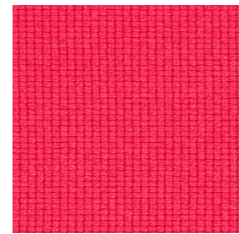
Tb-350 - UNI 60093



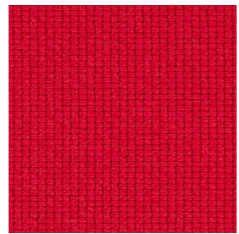
Tb-353 - UNI 68168



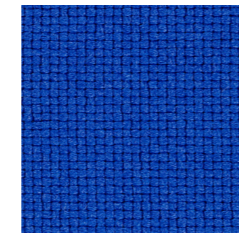
Tb-354 - UNI 64183



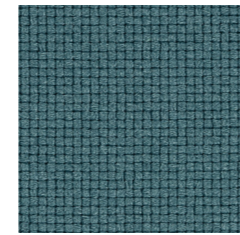
Tb-357 - UNI 64174



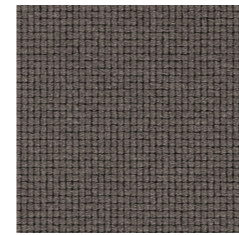
Tb-360 - UNI 64175



Tb-359 - UNI 66136



Tb-356 - UNI 67071



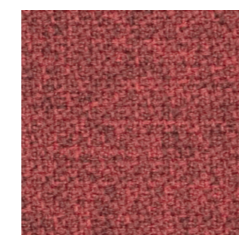
Tb-355 - UNI 61140



Tb-358 - UNI 60999

Gabriel

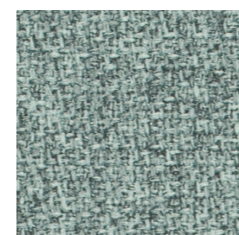
*Step Melange
by Gabriel*



Tb-307 - 64178



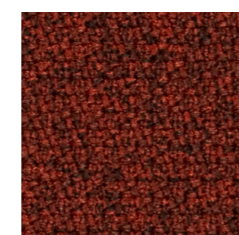
Tb-308 - 61104



Tb-309 - 68118



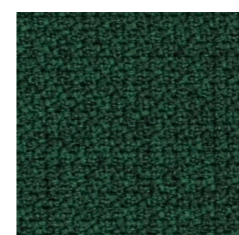
Tb-314 - 67004



Tb-315 - 63075



Tb-305 - 61103



Tb-316 - 68161



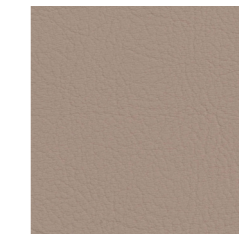
Tb-317 - 66019

Gabriel

*Valencia
by Spradling*



Tb-348 - CHESTNUT



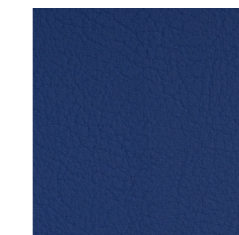
Tb-345 - WARM GREY



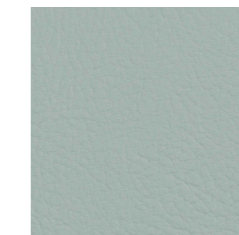
Tb-246 - KIRSCHKE



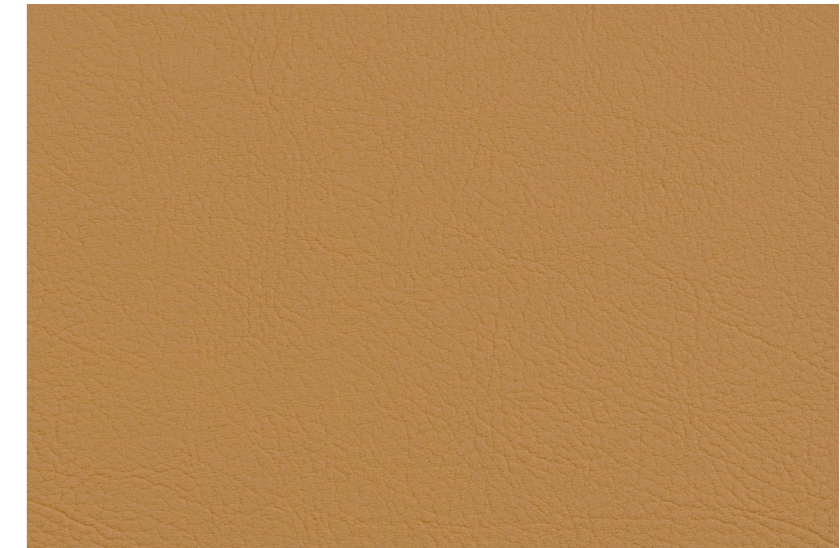
Tb-253 - PURE WHITE



Tb-244 - LAVENDEL



Tb-346 - SKYLIGHT



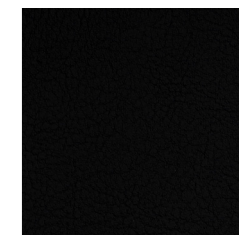
Tb-347 - CASHMERE



Tb-349 - PETROL



Tb-248 - GRAPHITE



Tb-252 - SCHWARZ



[es]

Para todas las colecciones aquí representadas, las referencias fuera de nuestro catálogo tendrán un cargo adicional de 45 euros netos por pedido.

Especificaciones técnicas al dorso. Los colores del muestrario pueden registrar una pequeña variación con respecto a la realidad.

[en]

For all the collections represented here, references outside of our catalog will have an additional charge of 45 euros net per order.

Technical specifications on the back. These samples are for guide reference.

[fr]

Pour toutes les marques représentées ici, les références hors catalogue ont un supplément de 45 euros nets par commande.

Les spécifications techniques figurent au dos. Ces échantillons sont donnés à titre indicatif.