

GROUP C/D

Basic F.R. by Exit Solutions

[es]	[en]
· Composición: 100% Poliéster	· Composition: 100% Polyester
· Peso: 335 gr/m2	· Weight: 335 gr/m2
· Resistencia a la abrasión: 100.000 cl. Martindale	· Abrasion resistance: 100.000 cl. Martindale
· Inflamabilidad: BS EN 1021 0/1 • BS 5852/0 • BS 7176 Low Hazard • CAL TB117 Sección 1 • NFPA 260 Clase 1	· Flammability: BS EN 1021 0/1 • BS 5852/0 • BS 7176 Low Hazard • CAL TB117 Sección 1 • NFPA 260 Clase 1
· Mantenimiento: limpiar con paño húmedo y jabón neutro. Ver especificaciones del fabricante www.exitfabrics.com	· Maintenance: clean with a damp cloth and neutral soap. More information at www.exitfabrics.com

Gravity by Camira

· Composición: 100% Poliéster	· Composition: 100% Polyester
· Peso: 295 gr/m2	· Weight: 295 gr/m2
· Resistencia a la abrasión: >50.000 cl. Martindale	· Abrasion resistance: >50.000 cl. Martindale
· Inflamabilidad: EN 1021 - 1:2 (cigarrillo/cerilla) • BS 7176:2007 Low Hazard	· Flammability: EN 1021 - 1:2 (cigarrillo/cerilla) • BS 7176:2007 Low Hazard
· Mantenimiento: limpiar con paño húmedo. Ver espificaciones del fabricante www.camirafabrics.com	· Maintenance: clean with damp cloth. More information at www.camirafabrics.com

Citadel by Camira

· Composición: 100% Polipropileno resistente al fuego	· Composition: 100% Flame retardant Polypropylene
· Peso: 230 gr/m2	· Weight: 230 gr/m2
· Resistencia a la abrasión: >30.000 cl. Martindale 80.000 cl Martindale (COUTURE - CHECK)	· Abrasion resistance: >30.000 cl. Martindale 80.000 cl Martindale (COUTURE - CHECK)
· Inflamabilidad: EN 1021 - 1:2 2006 (cigarrillo) • BS EN 1021 - 2:2006 (cerilla) • BS 7176:2007 Low Hazard • CSE RF 1/75/A • CSE RF 3/77 - Class 1 • NF-P-92-507 M1 • DIN 4102 B1	· Flammability: EN 1021 - 1:2 2006 (cigarrillo) • BS EN 1021 - 2:2006 (cerilla) • BS 7176:2007 Low Hazard • CSE RF 1/75/A • CSE RF 3/77 - Class 1 • NF-P-92-507 M1 • DIN 4102 B1
· Mantenimiento: limpiar con paño húmedo. Ver espificaciones del fabricante www.camirafabrics.com	· Maintenance: clean with damp cloth. More information at www.camirafabrics.com

Medley by Gabriel

· Composición: 100% Poliéster	· Composition: 100% Polyester
· Peso: 510 gr/ml	· Weight: 510 gr/lm
· Resistencia a la abrasión: 75.000 cl. Martindale	· Abrasion resistance: 75.000 cl. Martindale
· Inflamabilidad: EN 1021 - 1:2 2006 (cigarrillo) • BS EN 1021 - 2:2006 (cerilla) • CALTB117 Sección 1 • ASTM 84 • BS 476 Part 7 • Class Uno UNI 9174	· Flammability: EN 1021 - 1:2 2006 (cigarrillo) • BS EN 1021 - 2:2006 (cerilla) • CALTB117 Sección 1 • ASTM 84 • BS 476 Part 7 • Class Uno UNI 9174
· Mantenimiento: limpiar con paño húmedo. Ver espificaciones del fabricante www.gabriel.dk	· Maintenance: clean with damp cloth. More information at www.gabriel.dk

Creative Direction & Design:
Alambre Estudio

© Akaba, S.A.
All rights reserved
04/2023

AKABA

Atallu kalea 14
20170 Usurbil (Gipuzkoa)
Spain

akaba@akaba.net
T +34 943 372 211
F +34 943 371 052



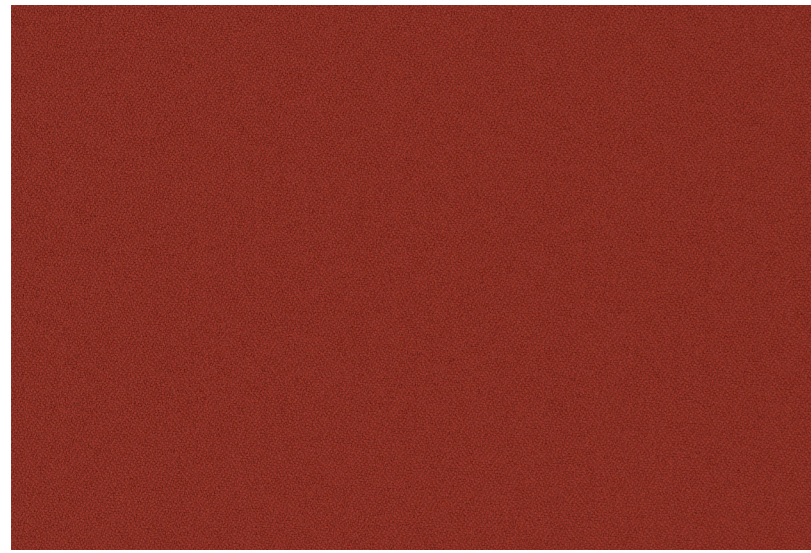
FABRICS

GROUP C/D

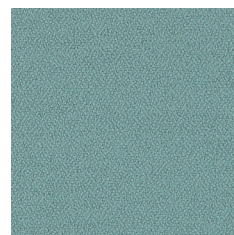
AKABA

GROUP D

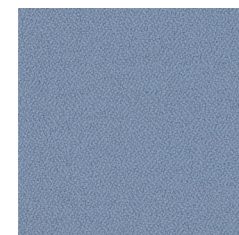
*Basic F.R.
by Exit Fabrics*



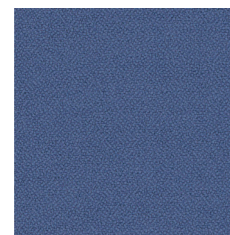
Td-100 - A027



Td-109 - A301



Td-103 - A095



Td-107 - A004

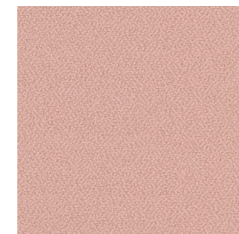


Td-108 - A755

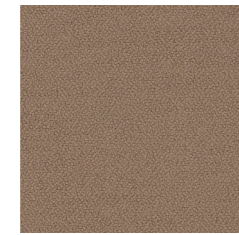
**exit
fabrics.** Upholstery
for all needs



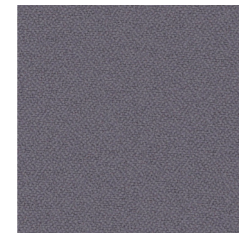
Td-101 - A462



Td-104 - A315



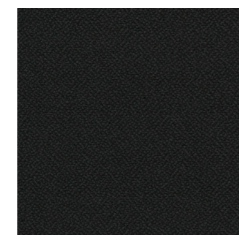
Td-110 - G132



Td-105 - A108



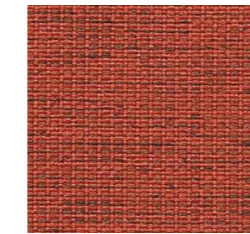
Td-102 - A026



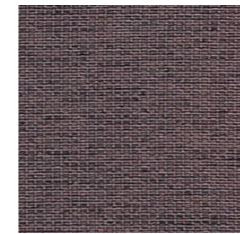
Td-106 - A009

GROUP C

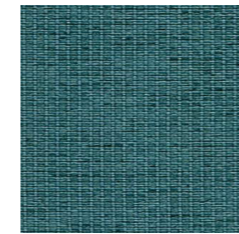
*Gravity
by Camira*



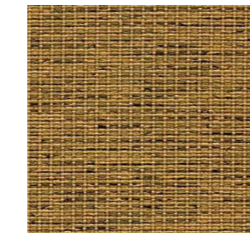
Tc-212 - TIGERLILLY



Tc-209 - NUTMEG



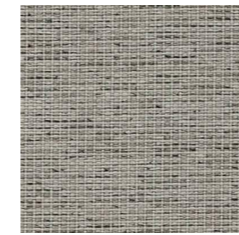
Tc-208 - LAKE



Tc-214 - MUSTARD



Tc-213 - ALMOND



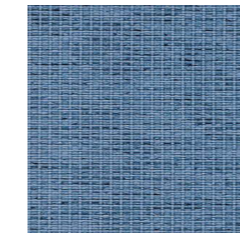
Tc-210 - DOVE

*Citadel
by Camira*

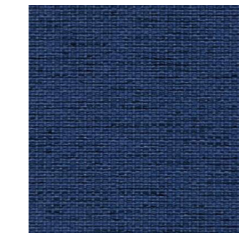


Tc-191 - REDOUBT

camira



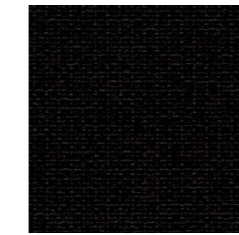
Tc-215 - FROZEN



Tc-219 - BROOK

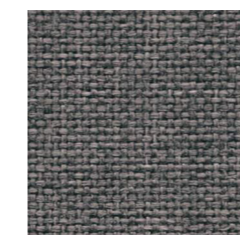


Tc-217 - SLATE



Tc-218 - BLACK

camira



Tc-190 - CONFINE



Tc-182 - CRAVEN



Tc-189 - RESISTANCE

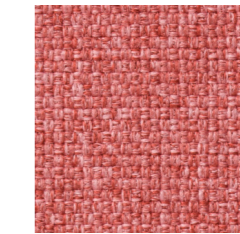


Tc-188 - STILLWATER

*Medley
by Gabriel*



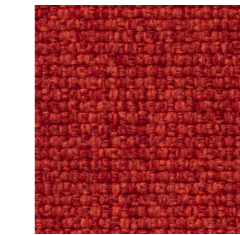
Tc-267 - 61189



Tc-261 - 63064



Tc-268 - 61003



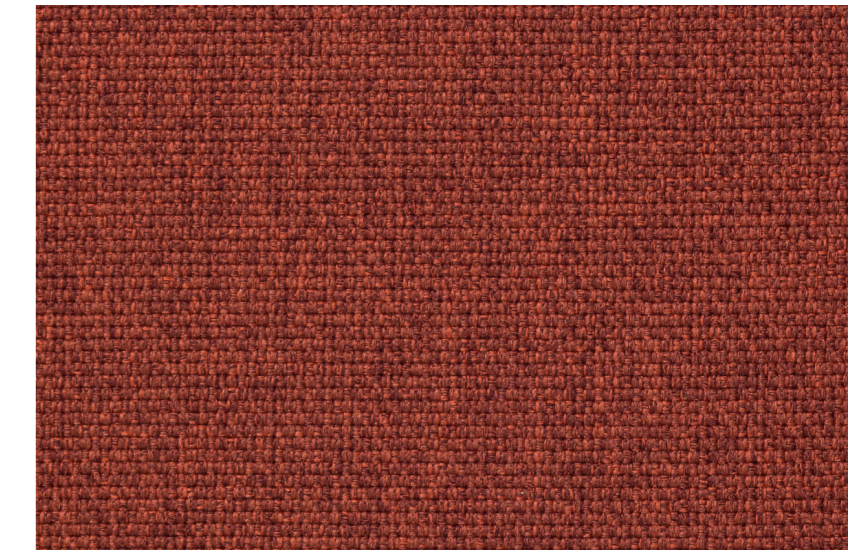
Tc-262 - 63016



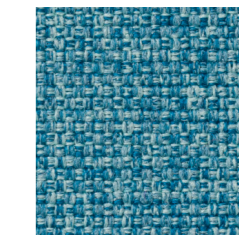
Tc-270 - 60999



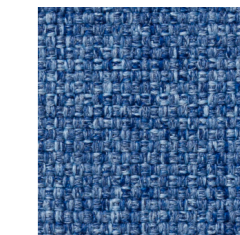
Tc-266 - 60167



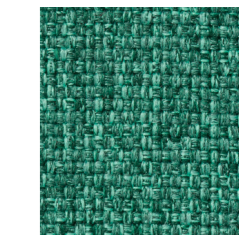
Tc-260 - 63063



Tc-264 - 67006

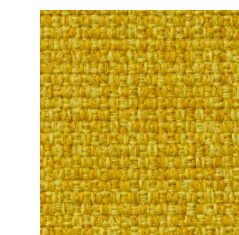


Tc-265 - 66144



Tc-263 - 67054

Gabriel



Tc-269 - 62002

[es]

Para todas las colecciones aquí representadas, las referencias fuera de nuestro catálogo tendrán un cargo adicional de 45 euros netos por pedido.

Especificaciones técnicas al dorso. Los colores del muestrario pueden registrar una pequeña variación con respecto a la realidad.

[en]

For all the collections represented here, references outside of our catalog will have an additional charge of 45 euros net per order.

Technical specifications on the back. These samples are for guide reference.

[fr]

Pour toutes les marques représentées ici, les références hors catalogue ont un supplément de 45 euros nets par commande.

Les spécifications techniques figurent au dos. Ces échantillons sont donnés à titre indicatif.