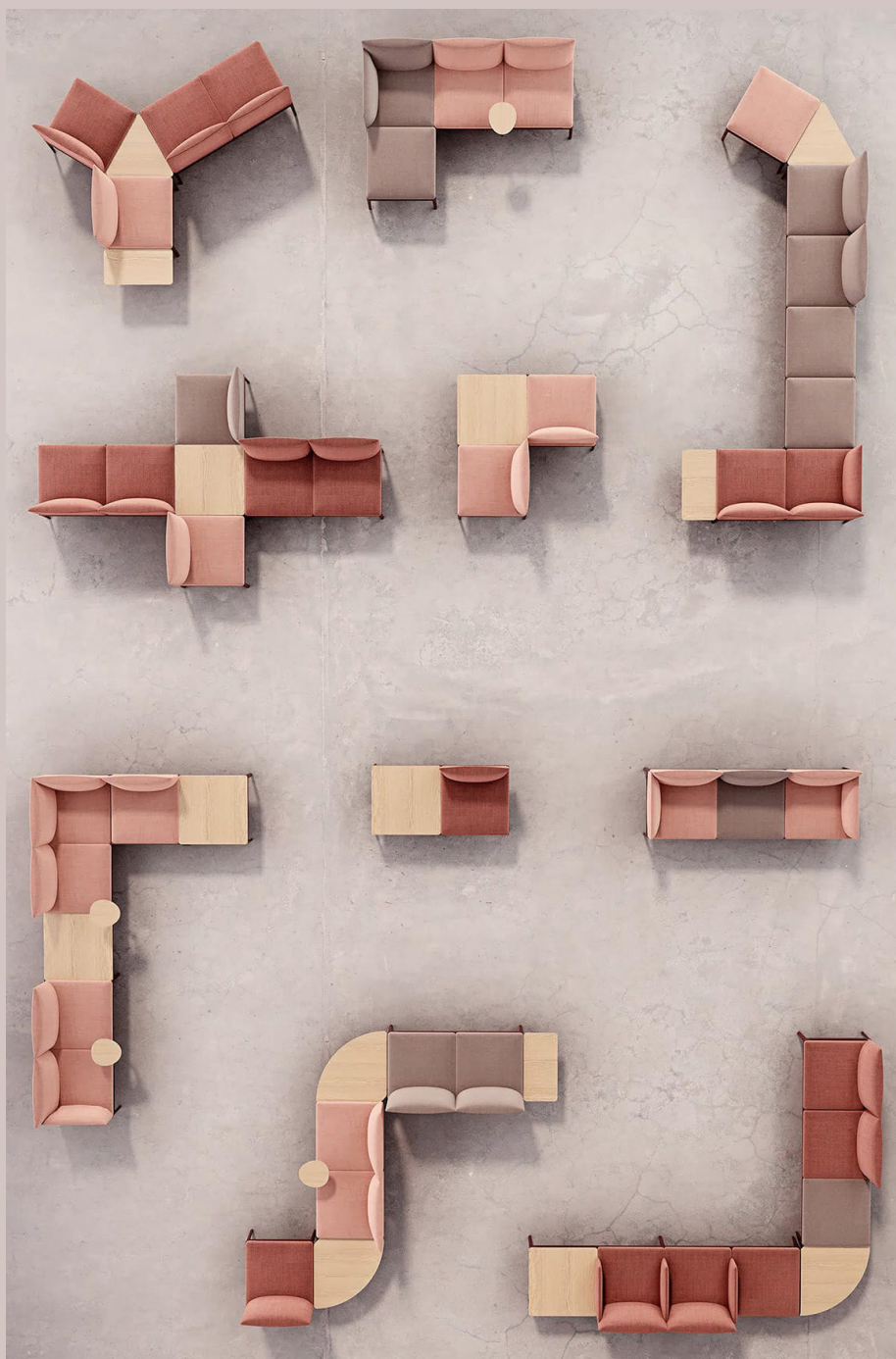
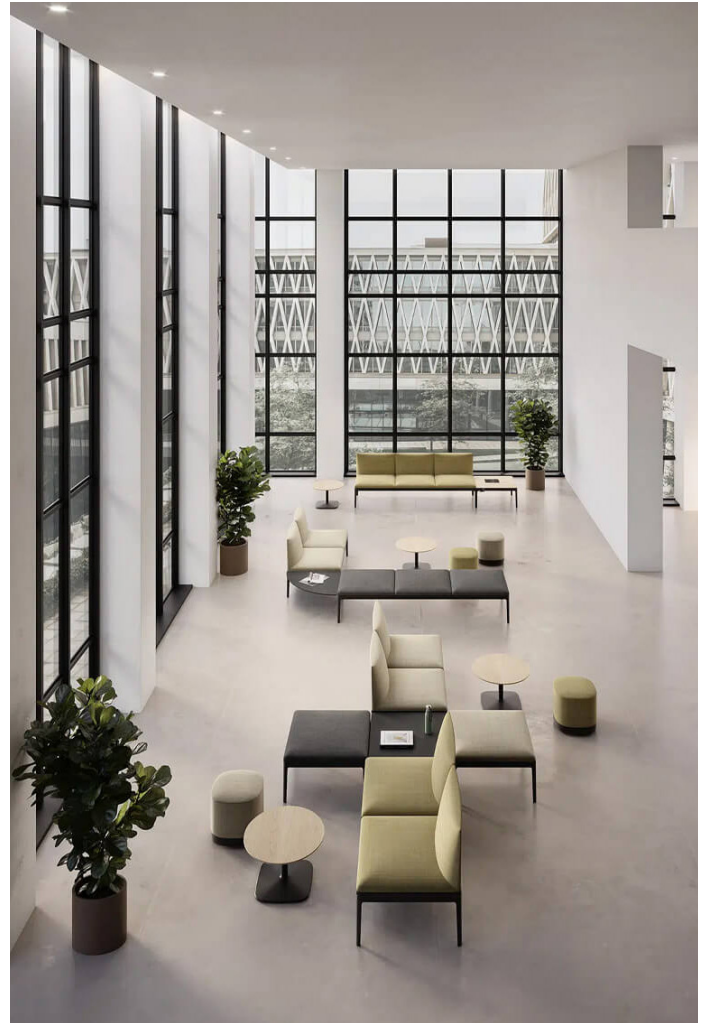


Modular Benches Kubika

Inspired by life
made by enea



Kubika is soft, spacious, and robust. This is a modular seating system that lets you create unlimited configurations through the combination of individual modules and accessories that are easily assembled.





Its versatility and sophisticated design with simple lines make it highly adaptable to any environment or to any specific needs, ranging from a sofa configuration to a waiting bench.

Structure



1 MODULE



2 MODULES



3 MODULES

Shell



FULL UPHOLSTERY

Sustainability

- Eco-designed (ISO 14006).
- FSC or PEFC certified birch/oak veneer laminated wood from sustainable forests.
- Polyurethane foam free from latex and hazardous substances.
- Selection of upholstery fabrics made from wool, recycled (and recyclable) fibres, or leather.
- Highly recyclable PP with low additive content, according to EU recommendations for the improvement of plastic recyclability.
- The number of components has been reduced, and their ease of separation has been enhanced, to make the end-of-life phase more manageable. All these components are 100% recyclable or reusable.
- Steel and aluminium: 100% recyclable (80% from recycled sources).

Certificates

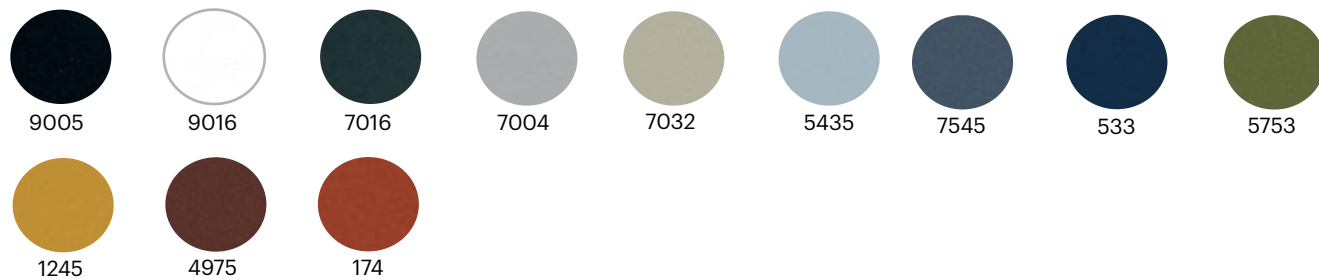
- Eco-designed (ISO 14006).
- Indoor Advantage Gold certified (indoor air quality).

Warranty

5 years

Finishes

Lacquered Structure



Upholstery Shell

Group C: Era, Xtreme, Enea Fabrics (P,B,S), Londres FR, Plus FR

Group D: Valencia, Urban, Advantage, X2, Medley, Felicity

Group E: Main Line Flax, Atlantic, Chili, Stretch Plain FR, Silvertex

Group F: Blazer, Cura, Step, Step Melange

Group G: Europost 2, Crisp, Silk, Fame, Field

Group H: Remix 2, Re Wool, Crisp, Clara

Group I: Canvas, Steelcut Trio, Tonus, Hallingdal

Group J: Divina/MD/Melange

Group LE: Elmo Leather

More information at:

<https://www.eneadesign.com/press/kubika-finishes.pdf>
Catalog ENEA



Products



Products

KUBIKA MODULAR BENCHES 1 MODULE

BM098001

Designed by: Estudi Manel Molina



Structure

- Laminated steel tube frame.
- Leg joints made of injected aluminium.
- Wooden modules.
- Varnished wood with matte finish.

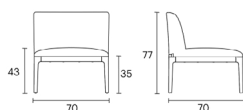
Shell

- Full upholstery.

Accesories

- Intermediate arm.
- Union table top 45°/60°/90°.
- Rectangular/Square union table.
- Side table.
- Writing table.
- USB charger.
- Linking device.

Measures



KUBIKA MODULAR BENCHES 2 MODULES

BM098002

Designed by: Estudi Manel Molina



Structure

- Laminated steel tube frame.
- Leg joints made of injected aluminium.
- Wooden modules.
- Varnished wood with matte finish.

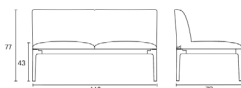
Shell

- Full upholstery.

Accesories

- Intermediate arm.
- Union table top 45°/60°/90°.
- Rectangular/Square union table.
- Side table.
- Writing table.
- USB charger.
- Linking device.

Measures



KUBIKA MODULAR BENCHES 2 MODULES

BM098003

Designed by: Estudi Manel Molina



Structure

- Laminated steel tube frame.
- Leg joints made of injected aluminium.
- Wooden modules.
- Varnished wood with matte finish.

Shell

- Full upholstery.

Accesories

- Intermediate arm.
- Union table top 45°/60°/90°.
- Rectangular/Square union table.
- Side table.
- Writing table.
- USB charger.
- Linking device.

Measures



WEIGHT - VOLUME

Product	Weight (kg)	Dimensions (cm)	Units/Box	Weight/Box (kg)	Heat Load (MJ)
1 seat frame	5.5	80 x 100 x 70	1	6.05	5.5
2 seat frame	9.4	80 x 100 x 130	1	10.3	9.4
3 seat frame	12.52	80 x 100 x 200	1	17.1	12.2
Seat	3.84	72 x 72 x 28	2	8.58	82.075
Seat and backrest	6.98	72 x 72 x 60	2	14.85	125.65
Seat and backrest with right arm	8.47	72 x 72 x 60	2	17.84	142.15
Seat and backrest with left arm	8.47	72 x 72 x 60	2	17.84	142.15
Legs	5.6	40 x 40 x 25	4	6.2	6.2



Ola Auzoa, 4
20250 Legorreta
Gipuzkoa, Spain
+34 943 806 275
www.eneadesign.com
@eneaofficial